

AC RESEARCH SUPPORT NEWSLETTER

THE ACADEMIC COMMONS

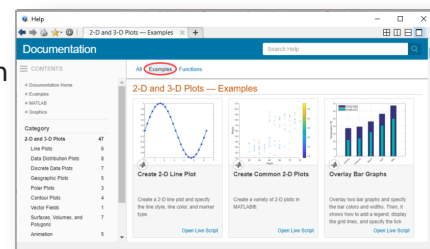
Summer 2022

Welcome to The Academic Commons research support newsletter! This report introduces you to tools to assist with your research, highlights support available at every stage of the process, and invites you to events related to research and publishing. The resources outlined in this newsletter are available to all Center City and East Falls faculty, clinicians, students, and staff through a site-wide license paid for by the Thomas Jefferson University Libraries. Visit the [University Library websites](#) and the [Academic Commons website](#) to access these tools.

New Resources

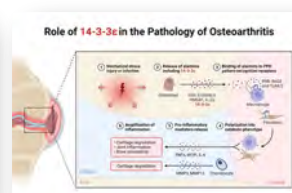


Jefferson Libraries is excited to welcome a new tool to our collection: [ChemDraw](#). ChemDraw can quickly turn ideas into publication-worthy drawings to communicate your research to a broad audience. [Download ChemDraw](#) and [read this article](#) to learn more.



ChemDraw isn't the only illustration tool we're adding to the mix! [BioRender](#), a software tool used to create and share professional science figures, is available to all TJU students, staff, and faculty. It offers a library of over 40,000 icons to use in the creation of scientific posters, presentations, publications, and more.

Set up your BioRender account on our [portal website](#). Register with your @jefferson.edu or @students.jefferson.edu email account. Learn more about BioRender, including tools related to grants and science communication, [on our website](#).

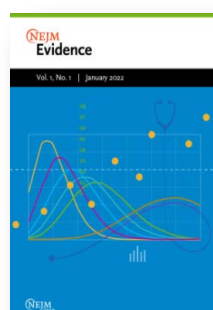


[LabArchives](#) added a new [stoichiometry table to its chemical sketcher](#). Chemical researchers will enjoy the ability to quickly generate stoichiometry tables from reactions they draw. Stoichiometry tables are chemically aware and can be saved with the entry. As a reminder, [University policy #500.05](#) requires principal investigators and their research staff use LabArchives as Jefferson's electronic research notebook.



Researchers can utilize [MATLAB](#), a programming and numeric computing platform, to analyze data, develop algorithms, and create custom models and plots. Set up your MATLAB account through the

[MATLAB portal](#). Access MATLAB via the portal or download the MATLAB software to your device.



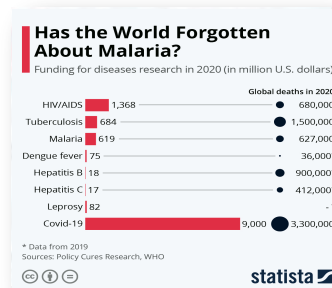
[NEJM Evidence](#), a new journal published by the New England Journal of Medicine, is now available. The online-only, peer-reviewed journal will be published monthly and highlight original research and new ideas in clinical trial design and clinical decision-making.

Citation Tools

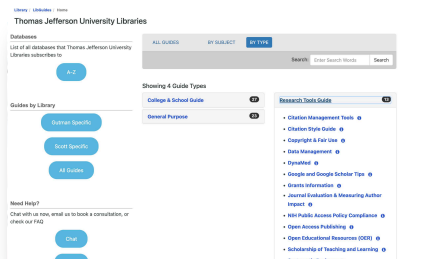
If you're looking for help using citation tools like EndNote, SciWheel, and RefWorks, check out our recently updated [Citation Management Tools](#) library guide. The guide provides step-by-step instructions to install and use software to organize your research. Save time formatting your manuscript with these tools!

Statistical Tools

[Statista](#) gives researchers direct access to quantitative data on various industries, including health, pharmaceuticals, finance, business, media, and politics. Statista regularly hosts webinars on how to run a search, interpret results, and utilize infographics within the portal. We will post upcoming webinar dates on our [library news blog](#) as they are scheduled.



Grants & Funding



Searching for funding opportunities and potential collaborators can be time-consuming. That's why [Pivot-RP](#), a popular grant search engine, is so useful. Search Pivot-RP by a sponsor, funding amount or type, deadline, and area of interest. Sign up for email alerts to never miss a potential funding opportunity!

Earlier this year, the libraries gave a facelift to our [Library Guides website](#). Library guides, sometimes referred to as research guides, are pages devoted to a specific topic or tool. Check out

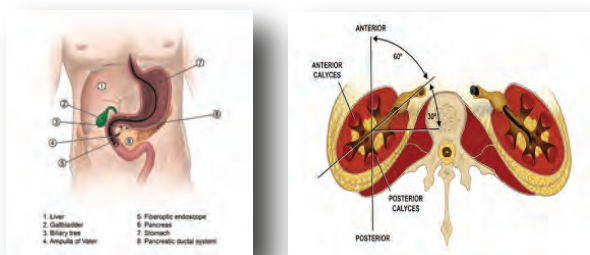
our recently updated [Grants Information guide](#) for help with grant applications.

Don't forget that the library can help support your open access publishing efforts! The [Jefferson Open Access Publishing Fund](#) provides authors up to \$2,500 to cover Article Processing Charges.



Publishing & Communication

You can consult the [Office for Professional Writing, Publishing, and Communication](#) for editing support and assistance at any stage of your writing, publishing, or presentation development process. Sign up for a [one-on-one consultation](#).



The [Graphics & Medical Illustration department](#) can help with poster design and printing. Their team creates medical illustrations to help you communicate your findings, and can print high-quality posters for conferences and presentations.

The [Jefferson Digital Commons \(JDC\)](#) serves as Jefferson's open access institutional repository. It's a great resource to share your scholarly work and that of other faculty, staff, and students.

Support

Librarians can assist with your research questions. Contact us for consultations on using library resources, literature or funding searches, or systematic reviews. Contact AskALibrarian@jefferson.edu to get started.

PUBLISHED BY THE ACADEMIC COMMONS (AC)

SCOTT MEMORIAL LIBRARY
library.jefferson.edu/scott Website
library.jefferson.edu/librarynews
[@SMLibrary_TJU](https://twitter.com/SMLibrary_TJU)

PAUL J. GUTMAN LIBRARY
library.jefferson.edu/gutman Website
library.jefferson.edu/librarynews/
[@GutmanLibrary](https://twitter.com/GutmanLibrary)

ACADEMIC COMMONS
jefferson.edu/commons Website
[@JEFFAcCommons](https://twitter.com/JEFFAcCommons)