



GPOCUS Asymptomatic Patients-AM

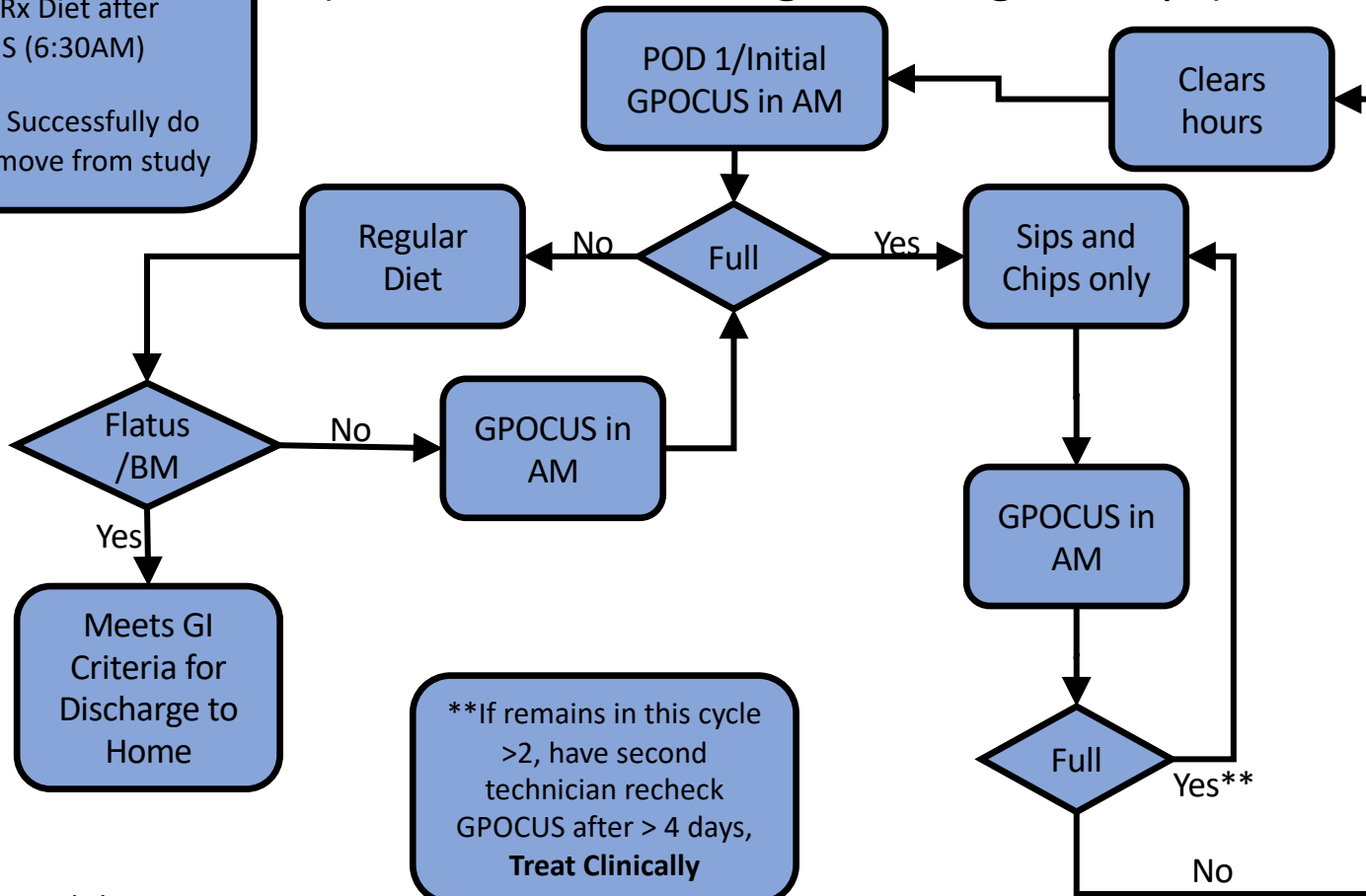
Assessment

(No Nausea/Vomiting/Belching/Hiccups)

All Patients NPO at midnight every night.
GPOCUS exams are at 6:00 AM.

Restart Rx Diet after GPOCUS (6:30AM)

If unable to Successfully do GPOCUS, remove from study



Age (yrs)	Full Volume (sq cm)
20s	≥6
30s	≥7
40s	≥8
50s	≥9
60s	≥10
70s	≥11
80s	≥11

****If remains in this cycle >2, have second technician recheck GPOCUS after > 4 days, Treat Clinically****