

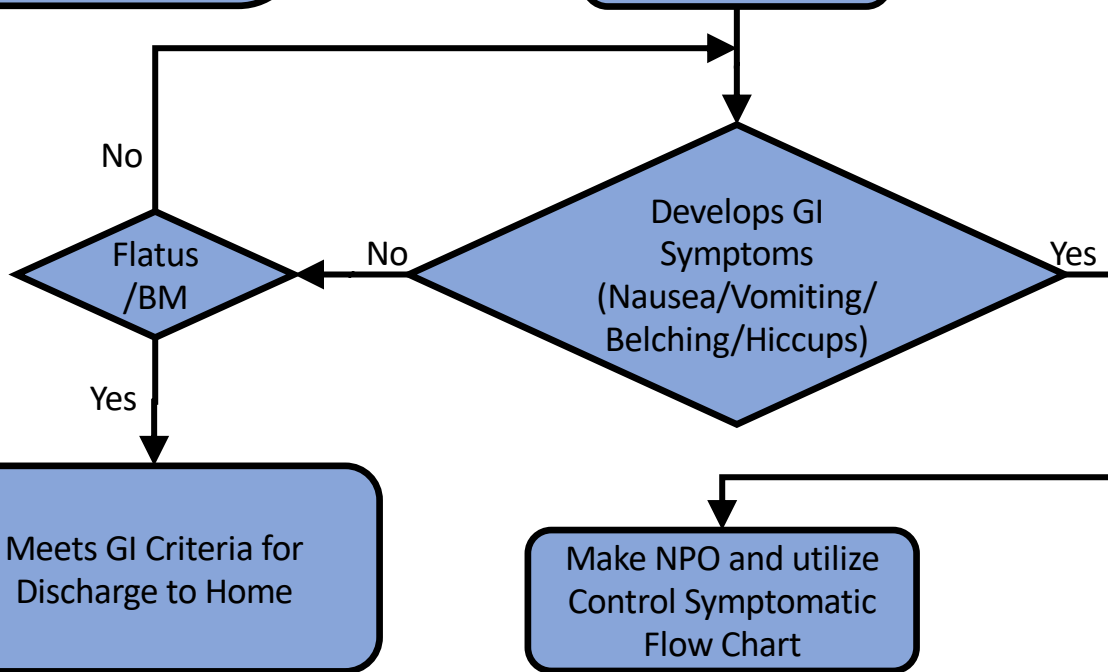


Control GI Asymptomatic Patients-AM Assessment (No Nausea/Vomiting/Belching/Hiccups)

All Patients NPO at
midnight every
night.
Assessment at 6:00
AM.

Restart Rx Diet
after assessment
(6:30AM)

POD 1 Advance
to Regular Diet



EPIC orders/Notes for study:

.GPOCUSPROGRESSNOTE	AM note for all patients in this study
.GPOCUSEXAMNOTE	Note for non-AM GPOCUS exams
GPOCUS AM Panel	Order set to be placed every PM on all patients in this study