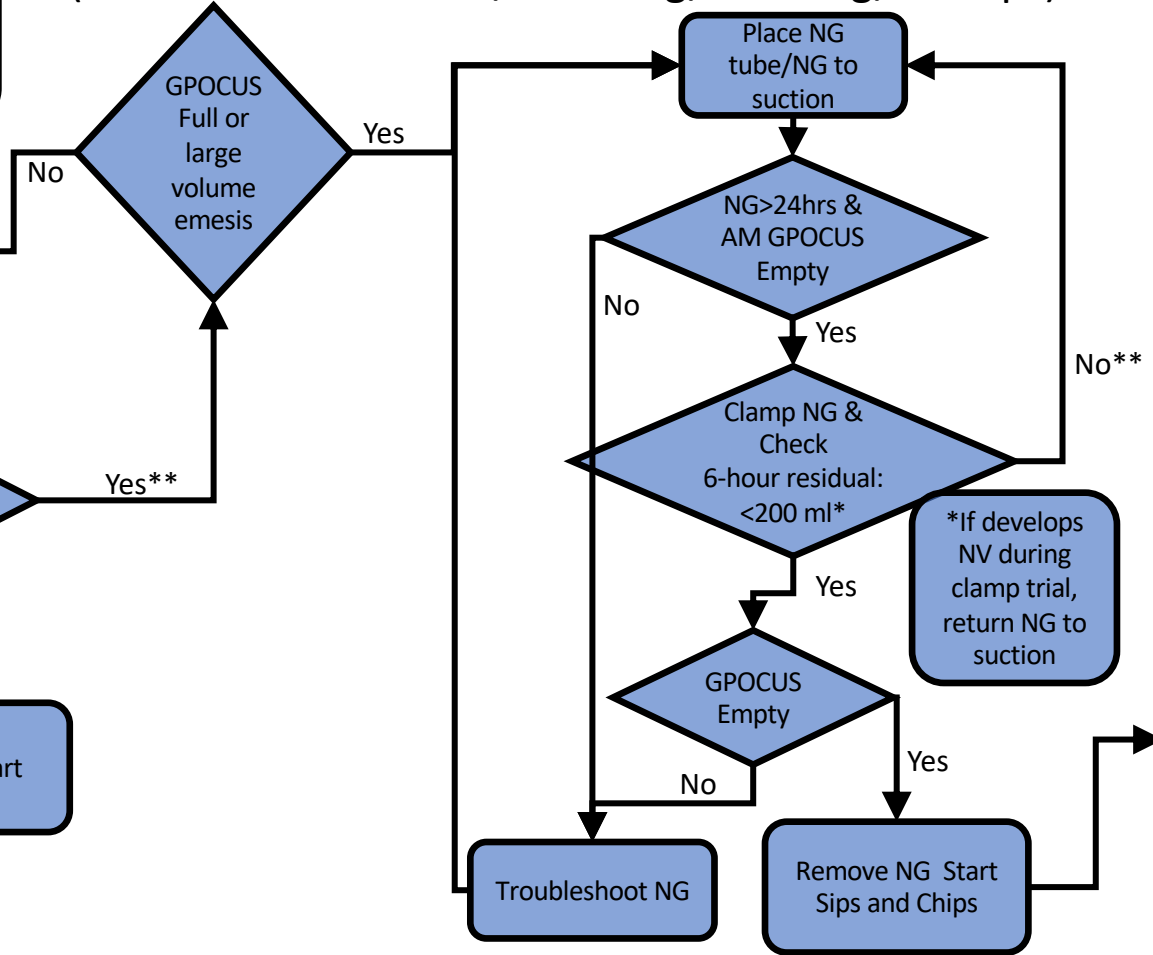
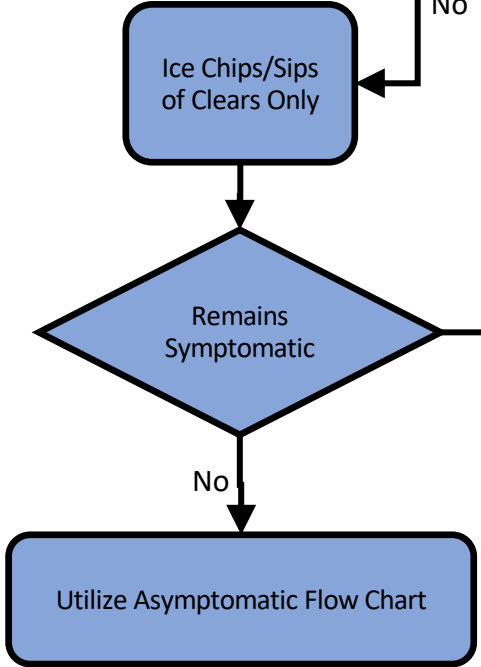




# GPOCUS Symptomatic Patients - AM Assessment (Patients with Nausea/Vomiting/Belching/Hiccups)

All Patients NPO at midnight every night  
GPOCUS at 6:00 AM.  
Restart Rx Diet at 06:30AM  
If unable to Successfully do GPOCUS, remove from study



\*If develops NV during clamp trial, return NG to suction

\*\*If remains in this cycle > 4 days, Treat Clinically

If Asymptomatic, utilize GPOCUS Asymptomatic Flow Chart. If becomes symptomatic, Treat Clinically (Utilize best clinical judgement in care. No longer utilize Flow Charts)